

Mobile use Coaxial Cable for HD-SDI

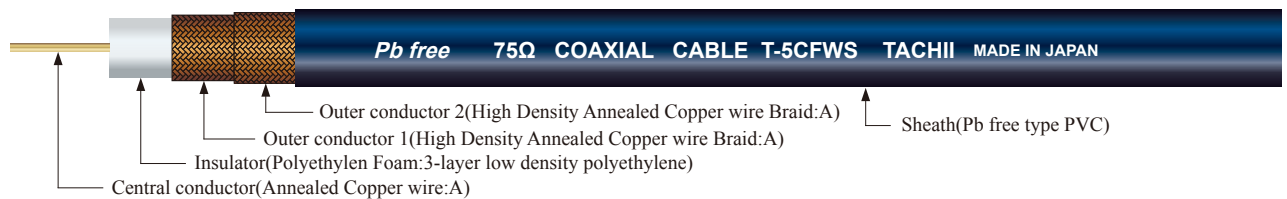
Applications

Best choice for broadcasting and studio use Coaxial Cable for HD-SDI and for carrying around repeatedly

Features

- TACHII's original composite assembly conductor has been employed for central conductor, considering cable management and flexion-proof(TCX-5CFWS only).
- Flexible and pliable design have been employed to make sure the more easy handling(until abt.-15°C,no cable stiffening)
- Due to better abrasion proof, Pb free type PVC has been employed as sheath material, considering waterproof at open air.
- In case of using for HD-SDI, 80m max. for TCX-5CFWS, 40m max. for TCX-3CFWS are recommended.EYE-pattern in transmission of HD-SDI signal on 50m length by 75% color bar(1080i 59.94Hz) is at the bottom. Please utilize for your cable selection.
- The processed product with both ends BNC connector harness is on sale.Please contact with our business person in charge.

Configuration



Model	Stock available											
	Black	Red	Green	Blue	Yellow	Gray	White	Brown	Orange	Purple	Pink	Sky
TCX-3CFWS	①/②	①/②	①/②	①/②	①/②	①/②	Ⓢ	Ⓢ	Ⓢ	Ⓢ	Ⓢ	Ⓢ
TCX-5CFWS	①/②	①/②	①/②	①/②	①/②	①/②	Ⓢ	Ⓢ	Ⓢ	Ⓢ	Ⓢ	Ⓢ

① 100m spool
② 200m spool
Ⓢ Custom-made
Other length spool available on request

Construction・Properties

Model	Central conductor	Insulator	Outer conductor 1(Braid)		Outer conductor 2(Braid)		Finished Product		Electrical Properties			
	Structure wires / mm	O.D. mm	Structure strands/wires/mm	Density %	Structure strands/wires/mm	Density %	O.D. mm	Approx. Weight kg/100 m	Conductor Resistance Ω/km	Capacitance pF/m	Characteristic Impedance Ω	Return Loss dB
										1kHz	10MHz	1M~2400MHz
NEW TCX-3CFWS	7/0.23A	3.1	24/6/0.1A	abt.94	24/7/0.1A	abt.94	5.8	5.0	66.3 max.	56	75	20.9 max.
TCX-5CFWS	7/0.36A+0.127A×6	4.9	24/7/0.12A	abt.93	24/9/0.12A	abt.96	7.7	8.6	23.9 max.			

Nominal Attenuation

Model	Nominal Attenuation (dB/100m)																
	10 MHz	30 MHz	72 MHz	88 MHz	90 MHz	135 MHz	180 MHz	220 MHz	270 MHz	440 MHz	742.5 MHz	770 MHz	1300 MHz	1485 MHz	2000 MHz	3000 MHz	
TCX-3CFWS	3.8	6.5	10.2	11.3	11.4	14.1	16.3	18.1	20.1	26.0	34.4	34.9	46.0	49.4	57.2	64.2	72.5
TCX-5CFWS	2.5	4.2	6.7	7.4	7.5	9.3	10.9	12.1	13.5	17.5	23.5	23.8	32.0	34.6	41.2	45.9	52.6

* Standard value means the central value measured by TACHII

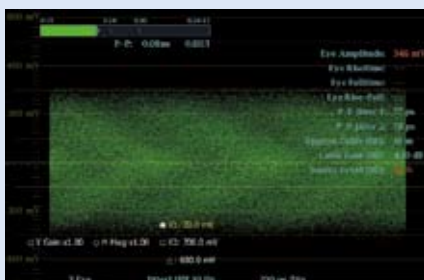
EYE-pattern on transmission for 50m

The EYE-pattern waves are as per the followings for your discussions after transmission of the actual HD-SDI signal by 8-types of coaxial cable (each 50 m).Please understand the transmission capability of the respective cable and utilize for your decision making of selection(as the data for your reference).



HD-SDI Signal Format
75% Color Bar
1080i 59.94Hz

TCX-3CFWS



TCX-5CFWS

